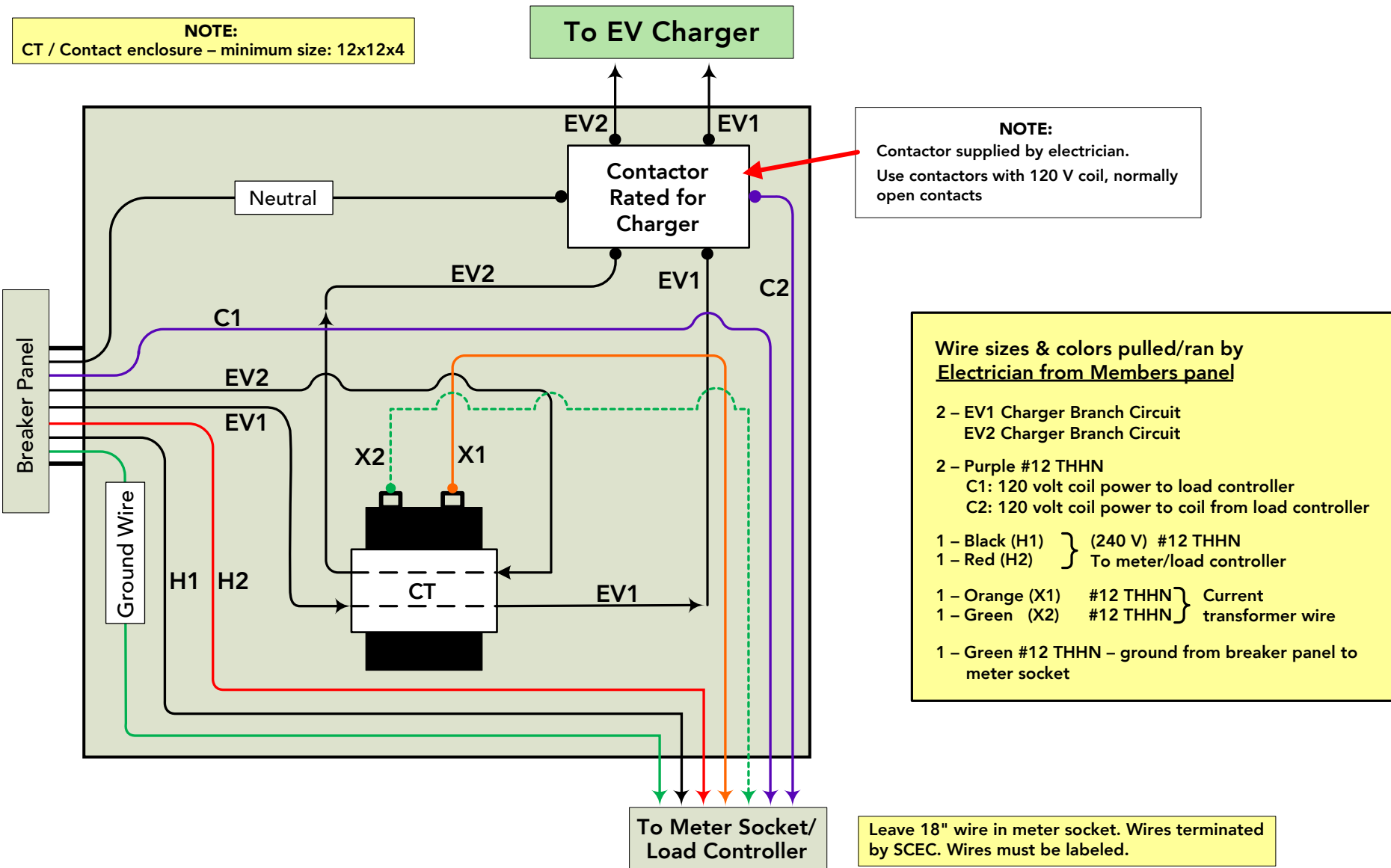
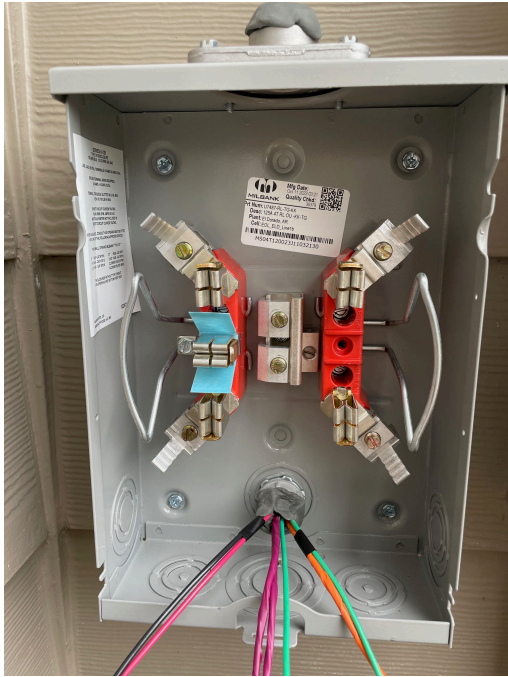


Wiring Diagram for Current Transformer (CT) Submetering of Off-peak Electric for EV Charger





Off-peak (subtractive) Meter Socket – supplied by electrical contractor



Example of off-peak installation – meter supplied by SCEC



Current transformer – supplied by SCEC

NOTES:

Meter socket needed = Millbank U7487-RL-TG or equivalent

1" Meter Hub = Millbank A7514 or equivalent

1" to ¾" reducing hub

5th terminal = Millbank 5TK2 or equivalent

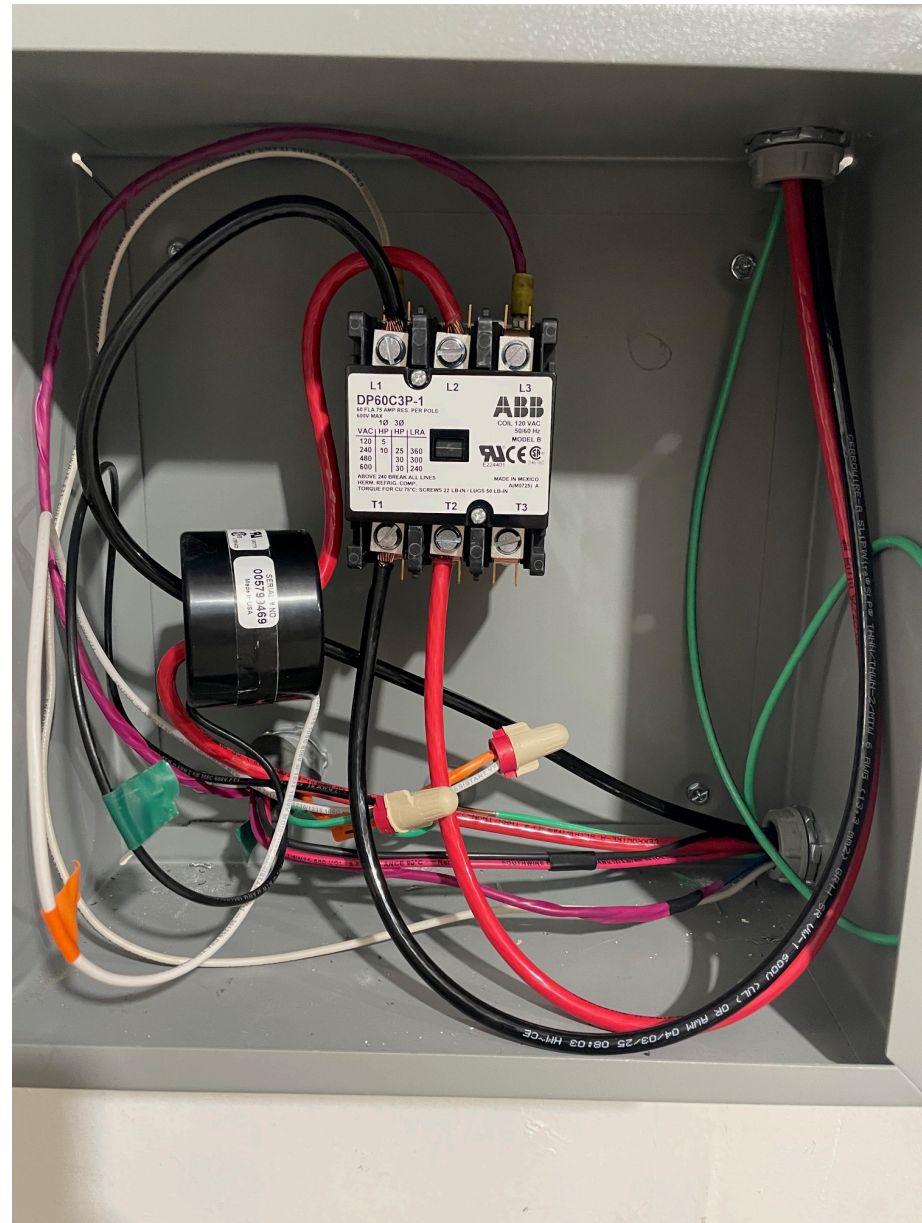
Off-peak Meter Socket provided by member's electrical contractor.

Current transformer provided by SCEC and can be picked up at SCEC headquarters.

Contact Information:

If you have questions, please call Member Services at 715-796-7000.

12" x 12" Off-Peak Junction Box



Contact Information:

If you have questions, please call
Member Services at 715-796-7000