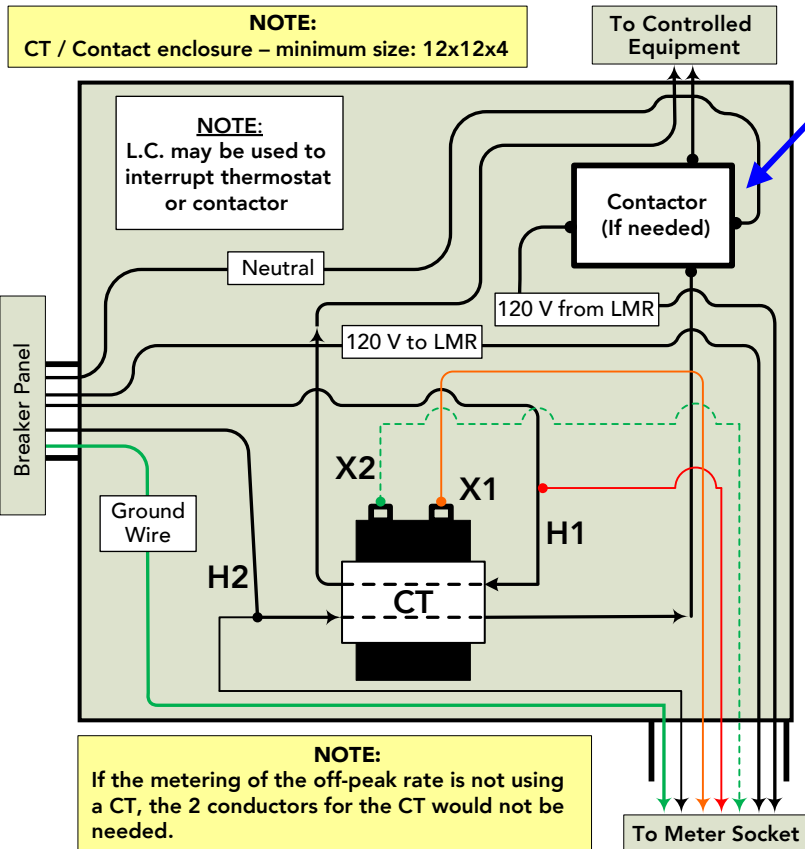


Wiring Diagram for Current Transformer (CT) Submetering of Off-peak Electric

LMR Schematic

<p>R1 – Water Heater (240 VAC, 30A) Blue wires (N.C.)</p> <p>R2 – Dual Fuel (120 VAC, 5A)</p> <ul style="list-style-type: none"> • Electric Boiler Orange } (N. O.) • Heat Pump Yellow } (N. C.) • Base board White/Green } (N. C.) • A/C <p>R3 – Storage (120 VAC, 5A)</p> <ul style="list-style-type: none"> • In-floor heat White/Blue } (N. O.) • ETS heaters Grey } (N. C.) • EV chargers Violet 	<p>R4 – Warning</p> <ul style="list-style-type: none"> • Brown/White – Relay driver <p>Load Control (L.C.) Power –</p> <ul style="list-style-type: none"> • Red (N) } (120 V) • Black } (240 V) • White/Red <p>Current Transformer (CT) provided by SCEC</p>
--	---

NOTE:
All wires of the same leg in the breaker panel must pass through the CT in the same direction.
CT X2 must be grounded either in the meter socket or the CT enclosure but not at both ends.



NOTE:

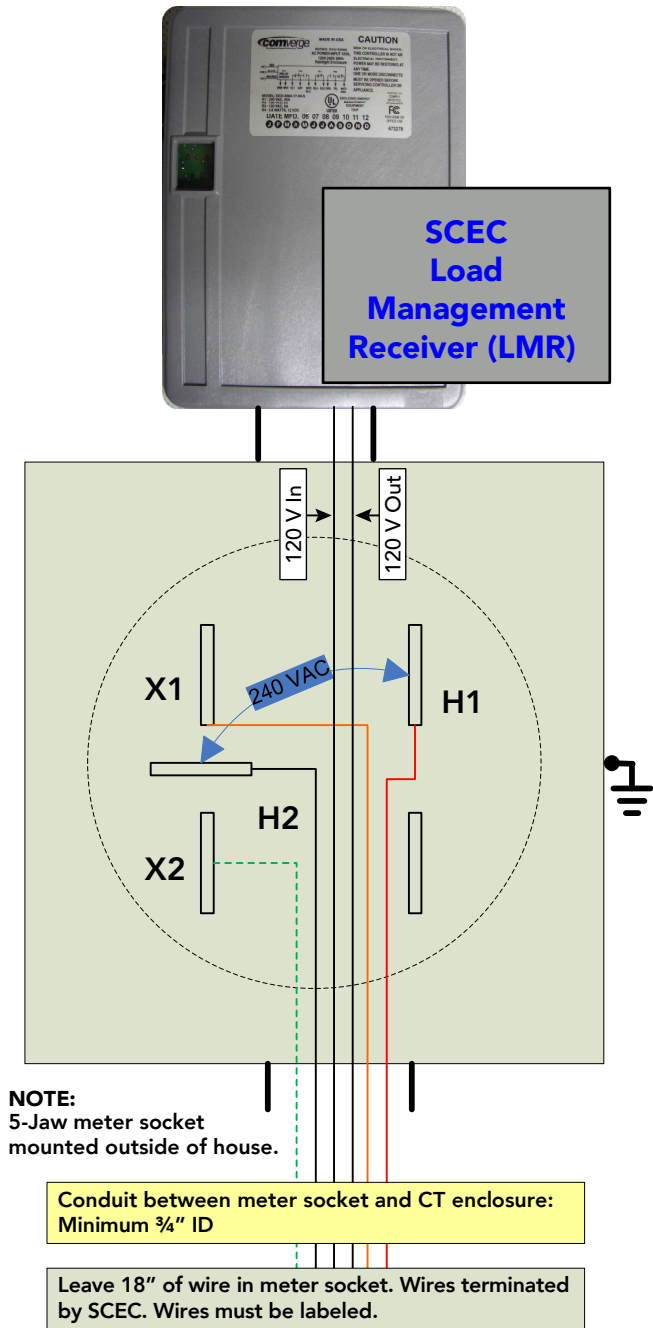
- No Contactor is needed for the Water Heater (use 30A relay in L.C.)
- Use contactors with 120 V Coils, normally open contacts

- Wire sizes & colors pulled/ran by Electrician from Members panel**

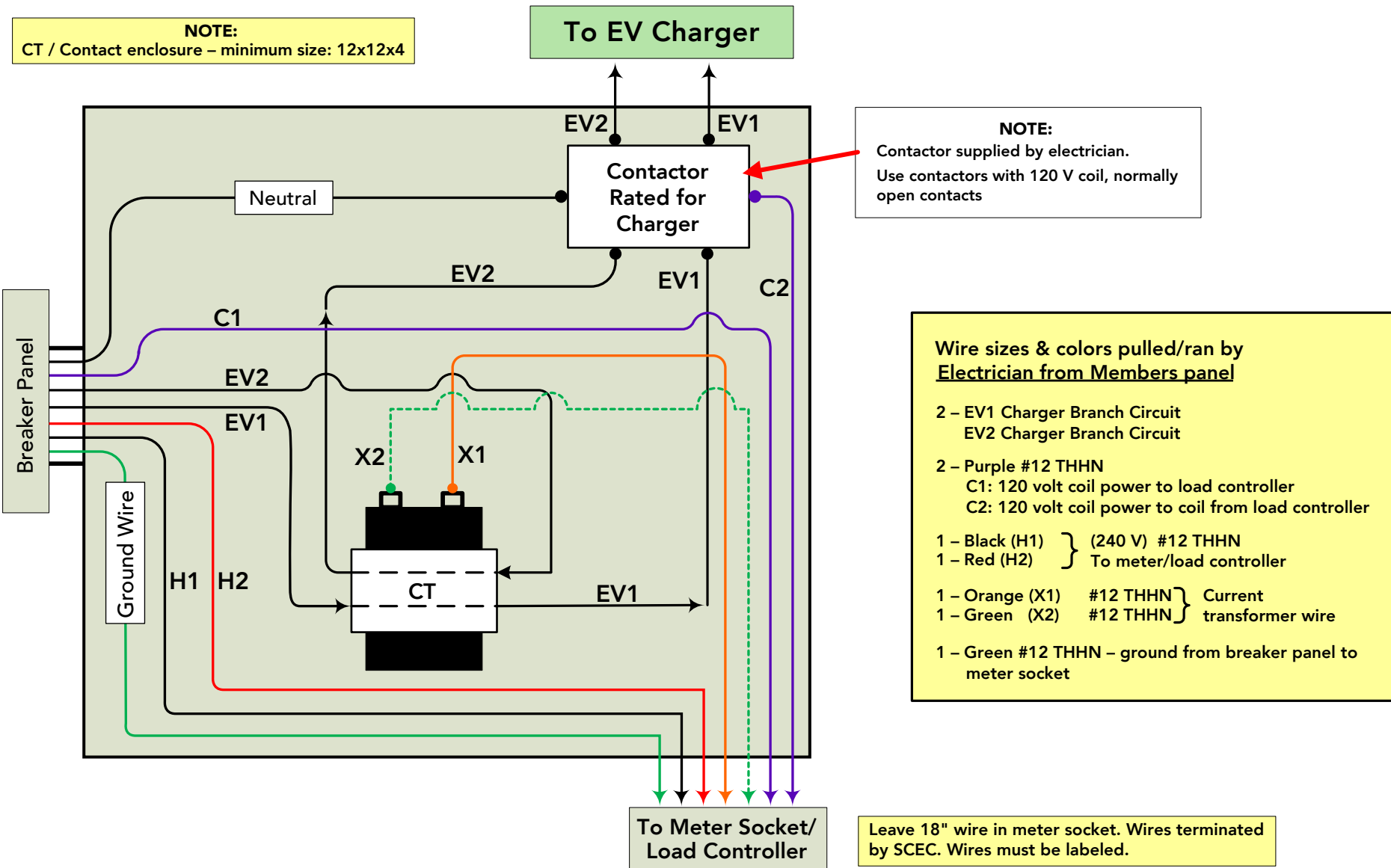
 - 2 – Blue #10 THHN (Water Heater)
 - 2 – Yellow #12 THHN (Dual Fuel: Electric heat / A/C)
 - 2 – Purple #12 THHN (Storage Heat / EV Charger)
 - 2 – Brown #14 THHN (Alert) – [If needed]
 - 1 – Black (H2) } (240 V) #12 THHN
 - 1 – Red (H1)
 - 1 – Orange (X1) #12 THHN
 - 1 – Green (X2) #12 THHN

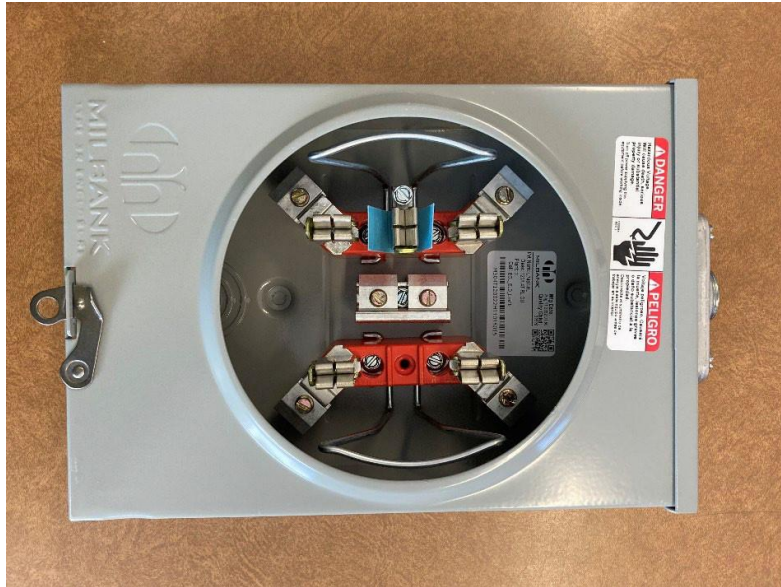
(NOTE: Check CT burden table to verify wire size)

 - 1 – Green #12 THHN to ground meter socket



Wiring Diagram for Current Transformer (CT) Submetering of Off-peak Electric for EV Charger





Off-peak (subtractive) Meter Socket – supplied by electrical contractor



Example of off-peak installation – meter supplied by SCEC



Current transformer – supplied by SCEC

NOTES:

Meter socket needed = Millbank U7487-RL-TG or equivalent

1" Meter Hub = Millbank A7514 or equivalent

1" to 3/4" reducing hub

5th terminal = Millbank 5TK2 or equivalent

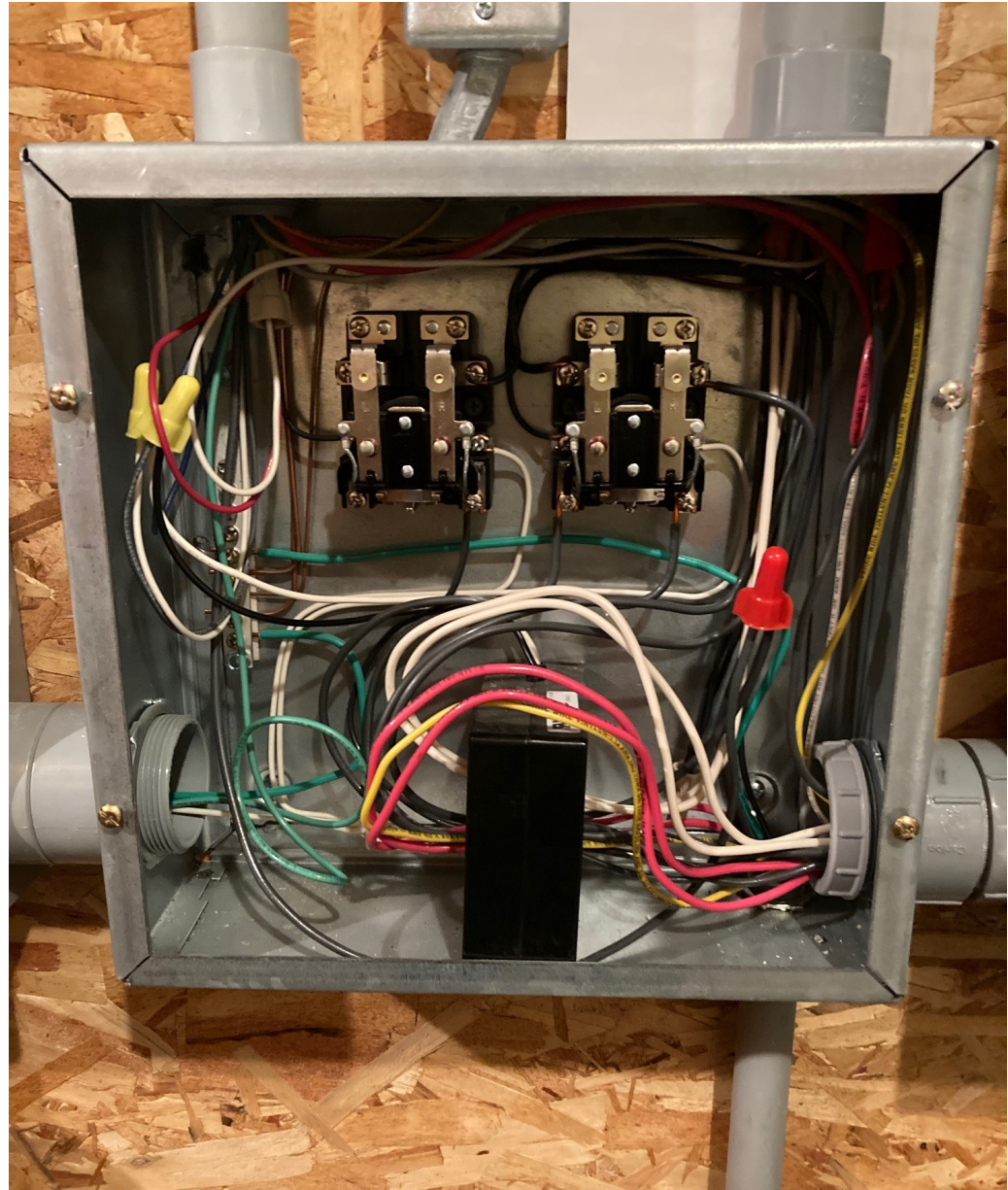
Off-peak Meter Socket provided by member's electrical contractor.

Current transformer provided by SCEC and can be picked up at SCEC headquarters.

Contact Information:

If you have questions, please call Member Services at 715-796-7000.

12" x 12" Off-Peak Junction Box



Contact Information:
If you have questions, please call
Member Services at 715-796-7000